



**STELLWAGEN BANK
NATIONAL MARINE
SANCTUARY**

2026 Marine Art Contest

for grades K-12 sponsored by
Stellwagen Bank National Marine Sanctuary
Massachusetts Marine Educators

Deadline: May 1, 2026

Divisions

Elementary School (grades K-4)
Middle School (grades 5-8)
High School (grades 9-12)
Scientific Illustration (all grades)

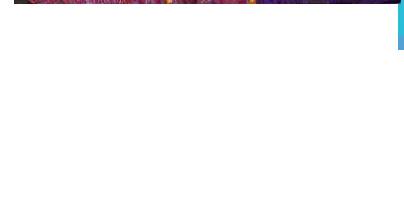
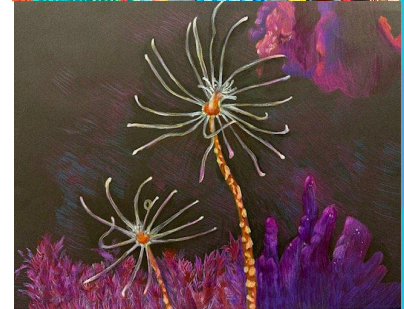
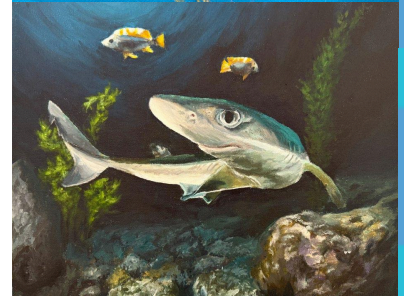
Theme

***Exploring the Biological Diversity and
Conservation of NOAA Stellwagen Bank
National Marine Sanctuary***

Stellwagen Bank National Marine Sanctuary is located just off the Massachusetts coast. Historically, its fish stocks supported the growth of the nation, while its whales now enhance the region's ecotourism industry. In addition to fishes and whales, Stellwagen Bank National Marine Sanctuary and the wider Gulf of Maine are renowned for their natural productivity and biological diversity, including a wide variety of seabirds and invertebrates. Students are challenged to explore the array of species and then depict one or more animals in their artwork. Images showing conservation impacts and habitat scenes are also encouraged.

Co-Sponsors

New England Aquarium, Center for Coastal Studies,
WHOI Grant, Ocean Genome Legacy Center at
Northeastern Univ., Whale and Dolphin Conservation,
National Marine Sanctuary Foundation, MIT Sea
Grant & local artists



2026 MARINE ART CONTEST

Massachusetts Marine Educators, Stellwagen Bank National Marine Sanctuary, and co-sponsors invite students in grades K-12 to enter the free 2026 Marine Art Contest. The theme is “*Exploring the Biological Diversity and Conservation of NOAA Stellwagen Bank National Marine Sanctuary*”. Art can depict one or more animals, show a predator-prey relationship, or illustrate diverse species in a sanctuary habitat. Judges prefer that the animals be depicted within the sanctuary, although images portraying species in their migration ranges are acceptable.



REQUIREMENTS

- ❖ All submitted works must be entirely hand-made original works created by the student. Any images created with AI will be rejected.
- ❖ Artwork must depict species that are found in Stellwagen Bank National Marine Sanctuary or the greater Gulf of Maine (off the Massachusetts coast).
- ❖ Entries should be submitted as high-resolution digital images – jpg or tif formats preferred but high-resolution PDFs will also be accepted.
- ❖ White, non-glossy paper is recommended - please be careful in scanning or photographing art to avoid glare.
- ❖ For Scientific Illustration, the art must include a highly accurate representation of an animal, highlighting features that help scientists tell it apart from other species
- ❖ Type your answers in the online entry form. Answer all questions on the form. Please be sure to include the common and/or scientific name(s) of the animal(s) depicted in the artwork. Include the student name in the name of the artwork file.
- ❖ Home addresses will be used for delivery of awards, if selected. Email addresses of parents or guardians, and phone numbers will be used for correspondence purposes. For all students under age 18, a parent or guardian must approve the submission.
- ❖ Students are limited to two entries submitted via the online form.

DIVISIONS

- ❖ Elementary School — Grades K-4
- ❖ Middle School — Grades 5-8
- ❖ High School — Grades 9-12
- ❖ Scientific Illustration — All Grades

PRIZES

- 1st Place: \$50 cash award, certificate.
- 2nd Place: \$30 cash award, certificate.
- 3rd Place: \$20 cash award, certificate.
- 4th-6th Places: certificate.



Additional prizes may be available. MME is working with local museums and marine institutions to acquire passes, posters, and other rewards.

ADDITIONAL CONTEST INFORMATION and USE OF IMAGES

- Winning artwork will be shared on the NOAA Stellwagen Bank National Marine

Sanctuary and MME websites and social media (including, but not limited to Facebook, Instagram, and X). MME/co-sponsors will have unrestricted use of submitted artwork.

□ Please note that by sending your artwork you are giving the contest sponsors permission to use the image for other purposes, such as websites and in publications of the sponsoring organizations. Credit to the artists will be applied whenever any of the art is used.

□ When artwork credit is published, the sponsors will use the student's first name, last initial, grade, and school (if space allows). If students do not want names posted, please tell us in the entry form.

□ Be aware of copyright rules. Copyrighted images can be used for inspiration but should not be reproduced. All work should be original to the artist.



ATTENTION TEACHERS: If sending entries from an entire class contact stellwagen@noaa.gov

WHERE TO GET MORE INFORMATION

Email stellwagen@noaa.gov

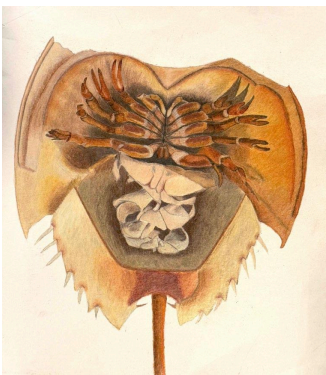
Web: <https://stellwagen.noaa.gov/pgallery/kidscorner.html>

WHERE TO FIND INFORMATION and IMAGES ABOUT SANCTUARY SPECIES

- Stellwagen Bank National Marine Sanctuary website (contains a variety of photo galleries) -- <https://stellwagen@noaa.gov>
- Center for Coastal Studies – <https://www.coastalstudies.org>
- NOAA Fisheries -- <https://www.fisheries.noaa.gov/find-species> (use the New England Mid-Atlantic region tab)
- World Register of Marine Species -- <https://www.marinespecies.org> and Encyclopedia of Life -- <https://ocean.si.edu/contributors/encyclopedia-life>

ART CREDITS

Harbor Seal, by Luna C, Gr. 3, Hurld Wyman Elementary School. *Lion's Mane Jelly*, by Xinyu F, Gr. 8, Edith C. Baker School. *Spiny Dogfish*, by Claire Z, Gr. 9, Bedford High School. *Lumpfish*, by Simone L, Gr. 5, Lawton Elementary School. *Solitary hydroids*, by Audrey Y, Gr. 4, Maria Hastings Elementary School. *Larval Fish*, by Brandon X, Gr. 10, Buckingham Browne & Nichols Upper School. *Squid*, by Wenhao X, Gr. 2 Fessenden School. *Humpback Breach*, by Catherine G, Gr. 7, Art Corner Studio School Program. *Horse Shoe Crab*, by Sophia S, Falmouth High School



2026 ENTRY FORM:

Apply Online [Here](#) or scan the QR code:

Deadline: May 1st, 2026

